



LEAK SENSING FLOAT SWITCH ASSEMBLY FOR DOUBLE WALL TANKS

MODEL # FLO-L10785

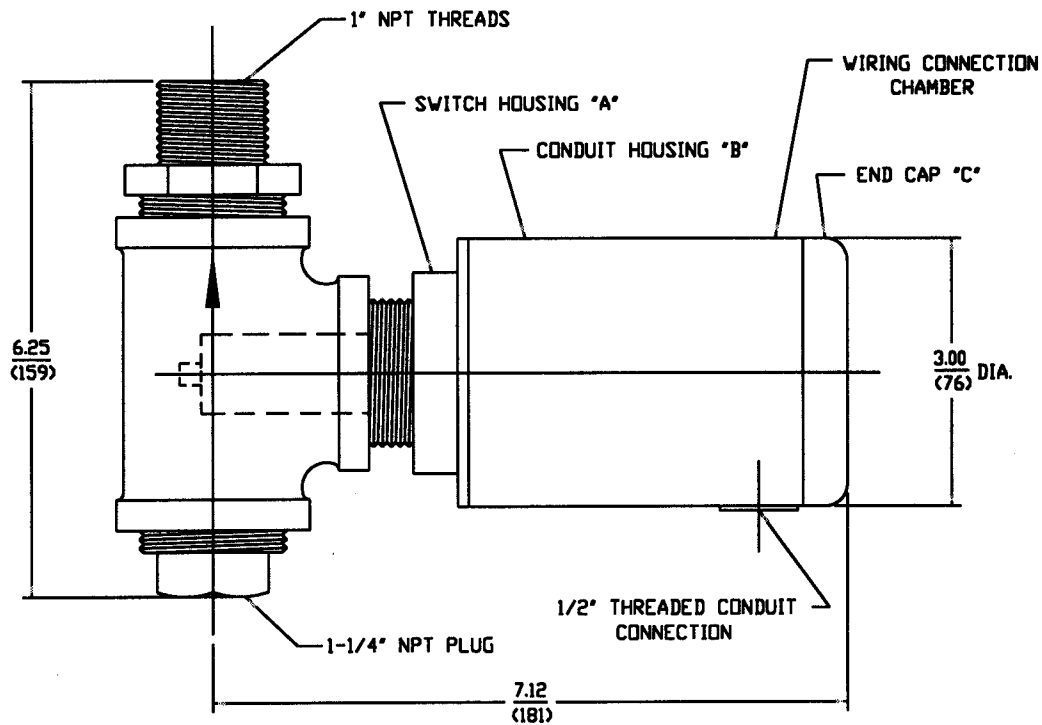


Description

- Complete leak sensing switch assembly, designed for easy mounting on double wall fuel tanks
- Mounts directly in the 1" NPT annular space drain found on most fuel tanks
- Complete assembly, including magnetic float switch with contact, cast iron tee and fittings and large conduit housing – no other parts required!
- Simple to install and wire to controller or alarm panel

Specifications

- Float switch – polypropylene
- Conduit housing – polypropylene
- Tee and fittings – cast iron
- Switch contact – normally open (N.O.) closed to alarm
- Contact rating – 1 amp max. @ 24VDC resistive, .08 amp @ 120VAC resistive, pilot duty only
- Weight – 4 lbs.



Installation notes:

1. The leak detection switch assembly is direction sensitive. It must be installed in the annular space drain opening on the bottom of the fuel tank with the 1" fitting facing upward. The direction arrow on the tee must be pointing up.
2. The threaded switch housing "A" of the leak detection switch is glued into the 1-1/4" tee. It must remain in this configuration for proper operation. To verify the correct position, the switch housing "A" has a "TOP" label affixed.
3. The unit is shipped with the 1/2" conduit fitting pointing down. It may be reconfigured so that it is pointing up by following the procedures below:
 - a. Turn the conduit housing "B" counter-clockwise 1/4 turn to release the conduit housing "B" from the switch housing "A". Make sure that the switch housing "A" does not turn in relation to the tee.
 - b. Rotate the conduit housing "B" 180 degrees and insert it back into the threaded portion.
 - c. Turn the conduit housing "B" clockwise 1/4 turn to tighten. Make sure that the switch housing "A" does not turn in relation to the tee.
4. The wiring connection chamber is accessed by unscrewing the end cap "C". To unscrew end cap "C", turn it counter-clockwise. Make sure that the switch housing "A" does not turn in relation to the tee.
5. After making the electrical connection, reinstall the end cap "C". Make sure that the switch housing "A" does not turn in relation to the tee.

Specifications:

- 1) Contact is "normally open" (N.O.) closed to alarm.
- 2) Contact rating: 1 amp max @ 24VDC resistive, .08 amp @ 120 VAC resistive, pilot duty.
- 3) Shipping weight 4 LBS. / 1.82 kg.
- 4) Dimensions in inches and (millimeters)

PATENT PENDING

Flotronix

ENGINEERED CONTROL SPECIALISTS

FLOTRONIX CORPORATION
 8481 BASH STREET, UNIT 1500
 INDIANAPOLIS, INDIANA 46250
 (317) 849-7377
 (FAX: (317) 849-7337

LEAK SENSING FLOAT SWITCH
 FOR DOUBLE WALL TANKS

DATE: DWG/REVISED

1/29/00 C.M.

5/4/00 WGW

MODEL # FLO-L10785

DWG # 00001 CHECKED BY: J.A.K.R.

SHEET # 1 OF 1 SCALE: 1:2